

Pacific Gas and Electric Company Pipeline Safety Workshops - Alamo

May 29, 2018



Together, Building
a Better California



Leak
Surveys



Pipeline
Patrol



Corrosion
Prevention



Integrity Assessments
Strength Testing



Valve Automation
and Replacement



Community Pipeline
Safety Initiative

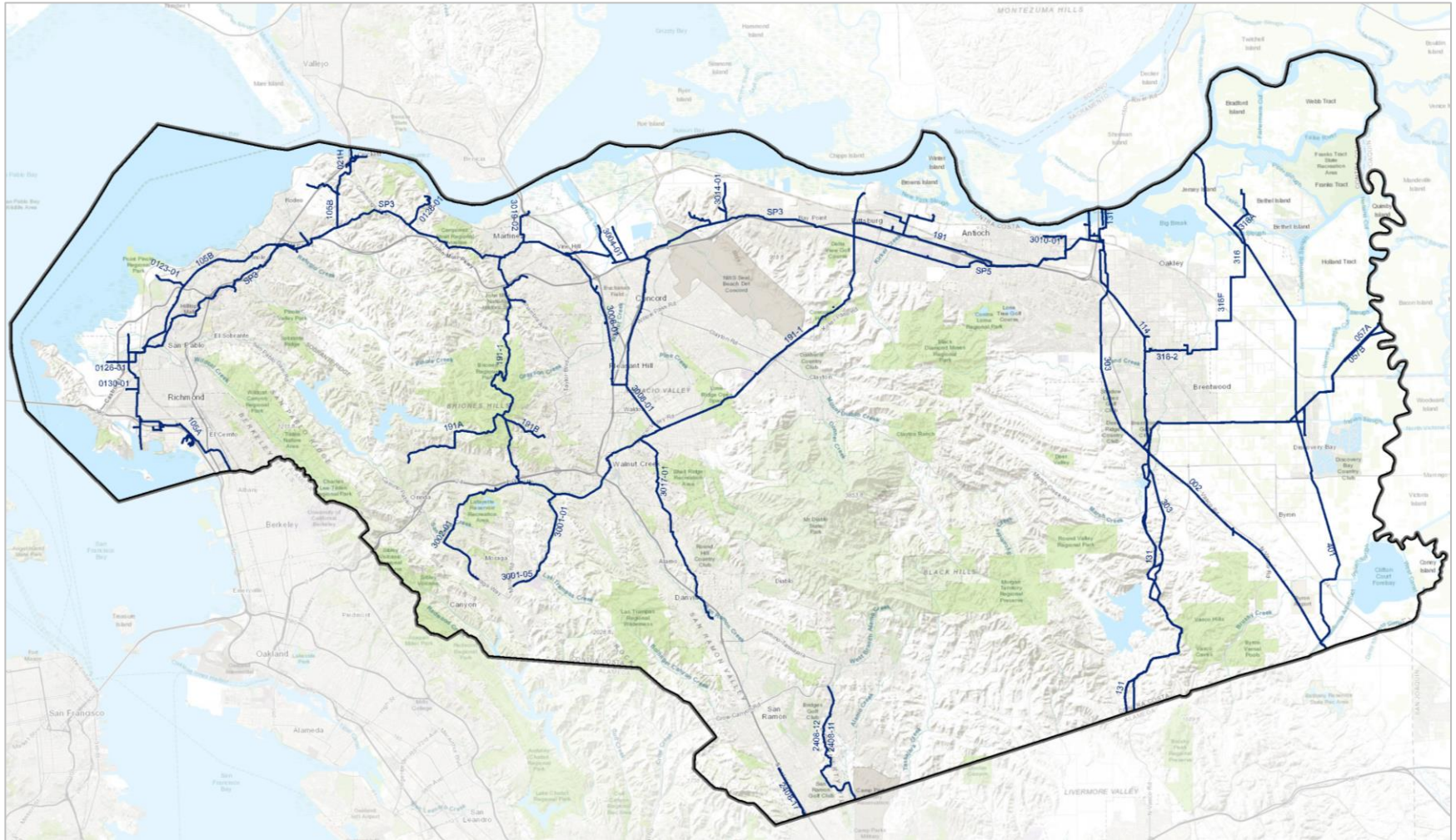


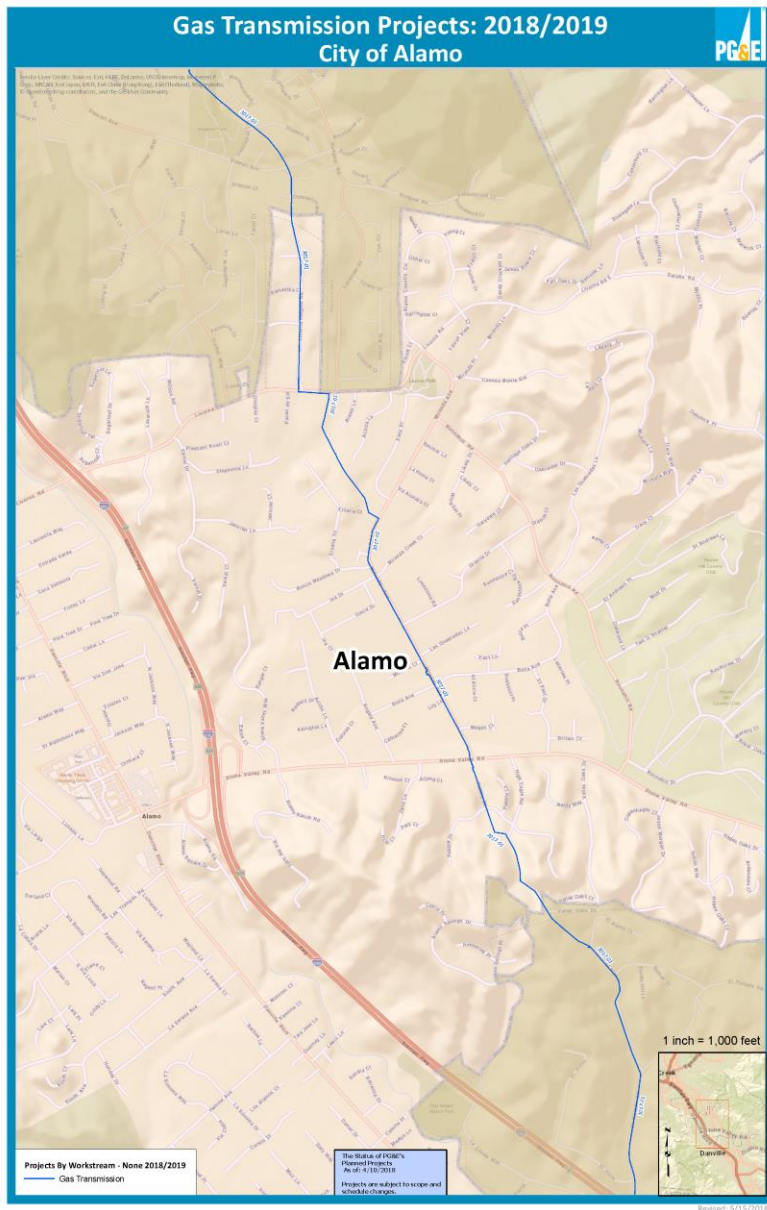
CONTRA COSTA COUNTY PIPELINES, INITIATIVES AND PROGRESS

Gas Pipelines – Contra Costa County	
Transmission pipelines	290 miles
Piggable transmission pipelines	117 miles
Transmission pipelines in HCAs	131 miles
Distribution miles	3,727 miles

Pipeline Safety Initiatives – Contra Costa County ¹	
Progress Since 2011	
Transmission pipeline Maximum Allowable Operating Pressure (MAOP) validation complete	100%
Transmission miles surveyed using high-precision GPS	100%
Transmission pipeline strength tested	46 miles
Transmission pipeline replaced (includes pipeline upgraded for in-line inspection)	33 miles
Valves automated on transmission pipelines	43 valves
PG&E emergency exercises conducted	71 exercises
Planned Initiatives	
Transmission miles to strength test	2.7 miles
Transmission miles to replace	3.1 miles
Valves to automate	2 valves

¹Data valid as of 05/23/2018, unless stated otherwise. Numbers in this table are approximate.





- **Line:** Distribution Feeder Main (DFM) 3017-01
- **Maximum Allowable Operating Pressure (MAOP):** 365 pounds per square gage (psig)
- **Diameter:** 8 inches
- **Material:** Steel
- **Install Year:** 1951, 1955, 1963, 1968, 1973, 2012
- **Miles of Pipeline:** approx. 2 miles
- **Miles of HCA:** approx. 4,000 feet
- **Integrity Assessments:** 2012 Strength Test, Direct Assessment in progress (2018)



EMERGENCY PREPAREDNESS

- **Committed to emergency preparedness** and continuous improvement of our emergency response and recovery capabilities
- Emergency Preparedness team develops and maintains **annual emergency response plans, training, exercises, and evaluation activities** in accordance with:
 - Incident Command System (ICS)
 - National Incident Management System (NIMS)
 - Standardized Emergency Management System (SEMS)
 - Homeland Security Exercise and Evaluation Program (HSEEP) April 2013 principles
- **Work closely with first responders** to share information on gas pipelines and develop gas emergency response plans to protect community safety
 - Coordinate annually to conduct scenario-based table top and field exercises
 - Attend monthly meetings with fire chiefs across the county to discuss PG&E gas safety and emergency response efforts



DAMAGE PREVENTION

January 2014 - April 2018

(Excavation Damages / 1,000 Excavation Tickets Received)

